

1 OVERALL SITE PLAN



**South of Miles**  
**Indian Wells Tennis Garden**  
 Parking Development  
**Garden of Champions LLC**  
 7820 Miles Avenue, Indian Wells, CA 92210

PRINTED

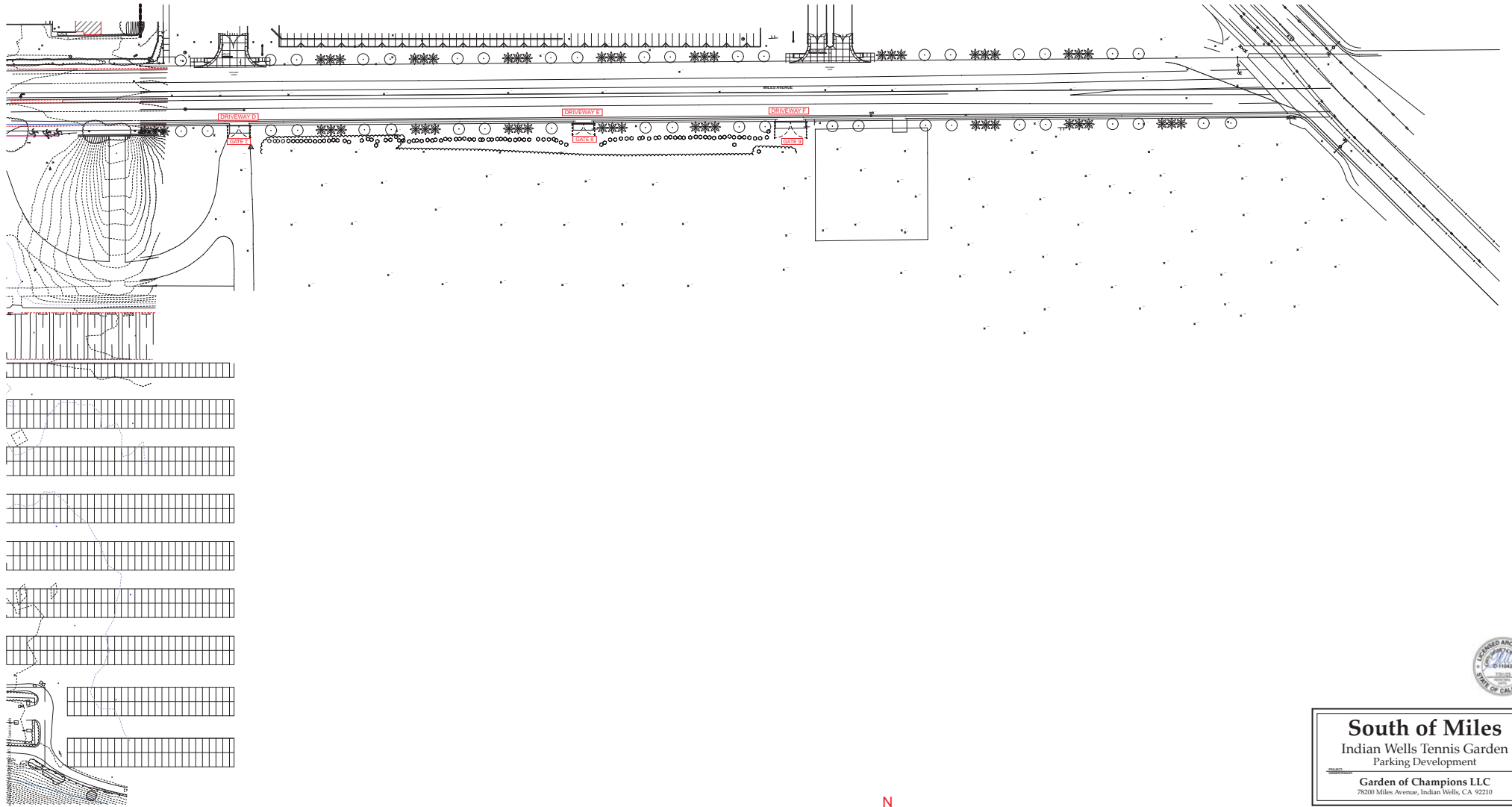
July 29, 2021

**Keisker & Wiggle Architects, Inc.**  
 20661 Camino de Estrella  
 Suite 200  
 Capistrano Beach, California 92624  
 P: 949/368-1150  
 F: 949/368-2760  
 E: info@kw-architects.com

© Keisker & Wiggle Architects, Inc. A copyright is claimed on this unpublished material. No publication or further distribution is allowed without the written permission of Keisker & Wiggle Architects, Inc. All rights reserved.

SITE PLAN WEST      SHEET  
**SP-1**

BY: STEPHAN BERT / Revision 03/21 at 12:31 AM / Rev: 04 / Notes: 01/08/2021/04/03/04/04/2021/07/29/14:04:06



2 OVERALL SITE PLAN

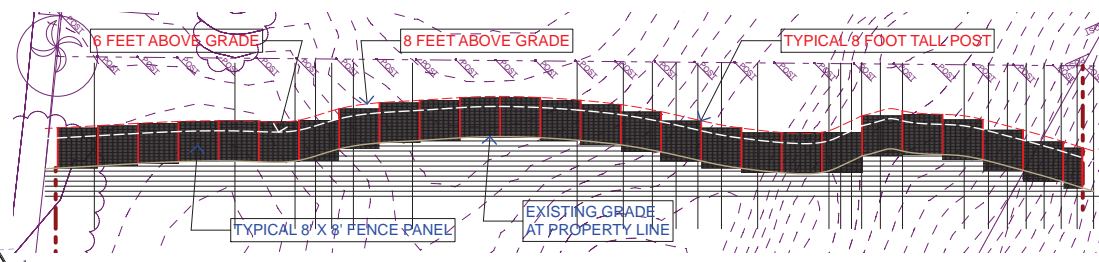
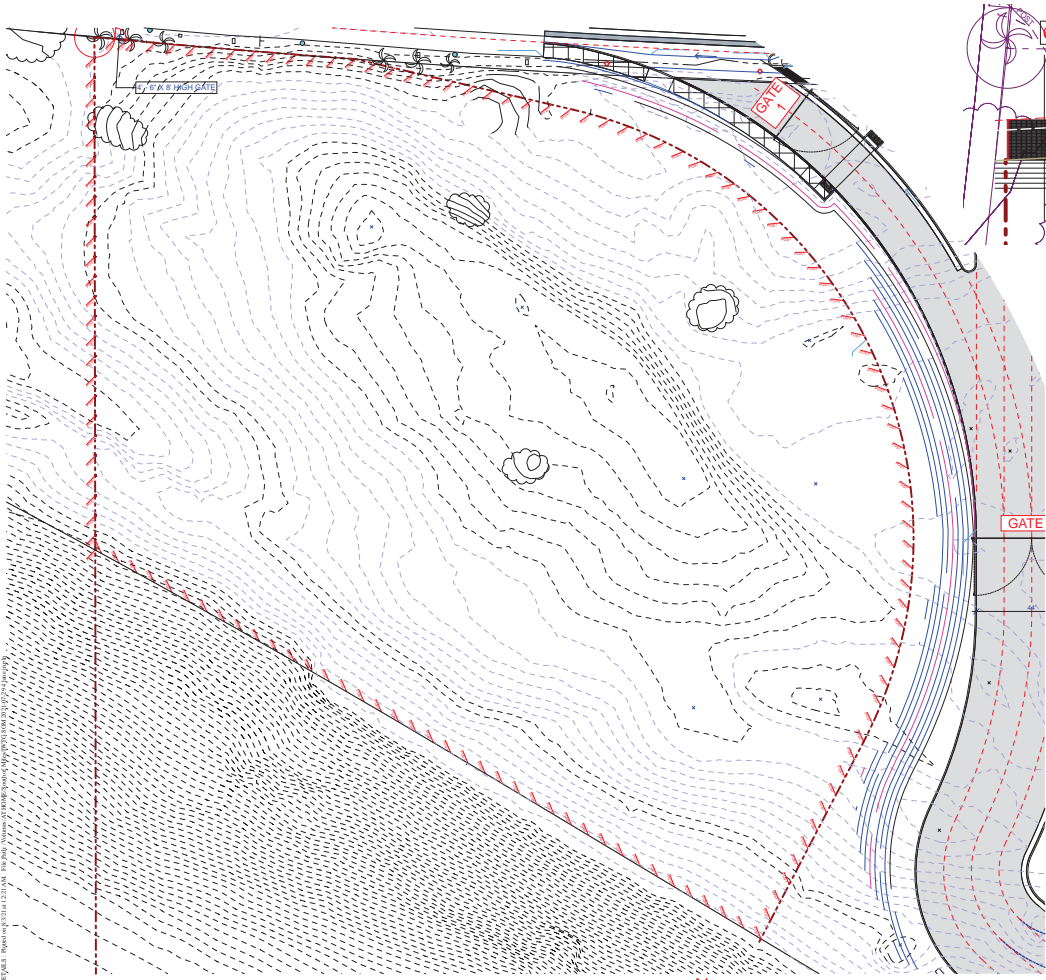
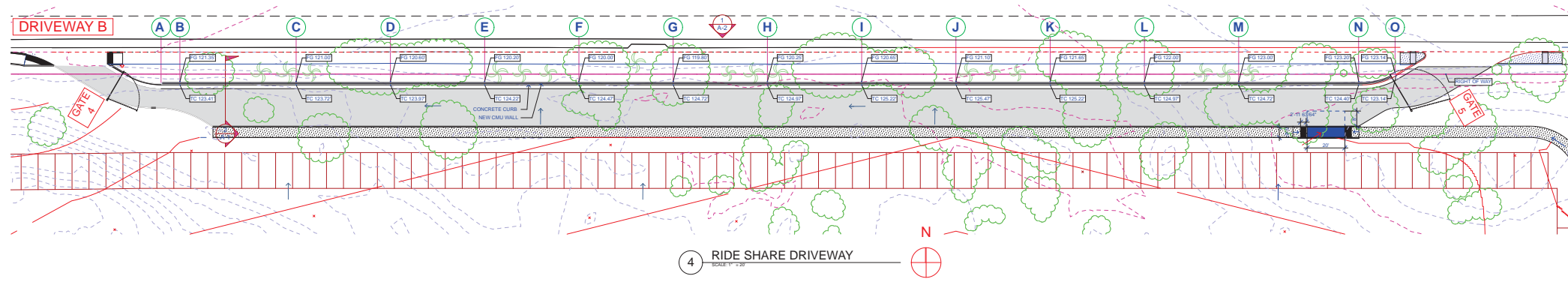


**South of Miles**  
 Indian Wells Tennis Garden  
 Parking Development  
 Garden of Champions LLC  
 78200 Miles Avenue, Indian Wells, CA 92210

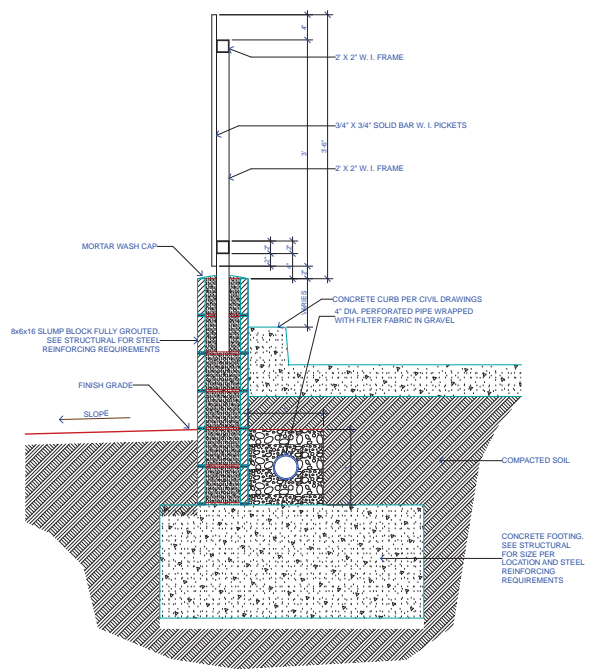
<p>26961 Camino de Estrella        Suite 200        Capistrano Beach,        California 92624        P. 949/388-1250        F. 949/388-2760        E. <a href="mailto:info@kw-architects.com">info@kw-architects.com</a></p>	PRINTED July 29, 2021
	© Keisker & Wiggle Architects, Inc. A copyright is claimed on this unpublished material. No publication or further distribution is allowed without the written permission of Keisker & Wiggle Architects, Inc. All rights reserved.

SITE PLAN EAST      SHEET **SP-2**

18-210101-PLAN EAST - Rev. 07/21/21 - 12:31 AM - Pk. Info. Version: 01/08/2021



**3 West Fence elevation 1" = 10'**  
SCALE: 1" = 10'



**1 TYPICAL WALL/GUARDRAIL SECTION**  
SCALE: 1/2" = 1'-0"



**South of Miles**  
Indian Wells Tennis Garden  
Parking Development

Garden of Champions LLC  
78200 Miles Avenue, Indian Wells, CA 92210

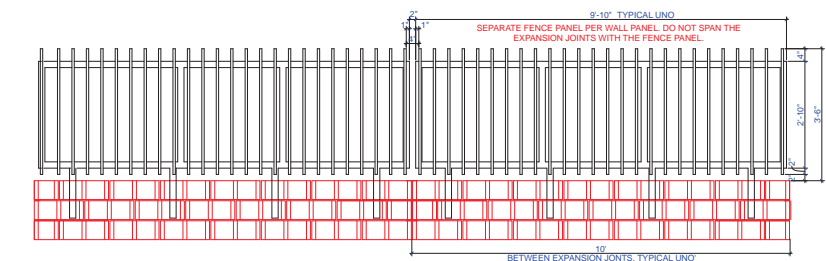
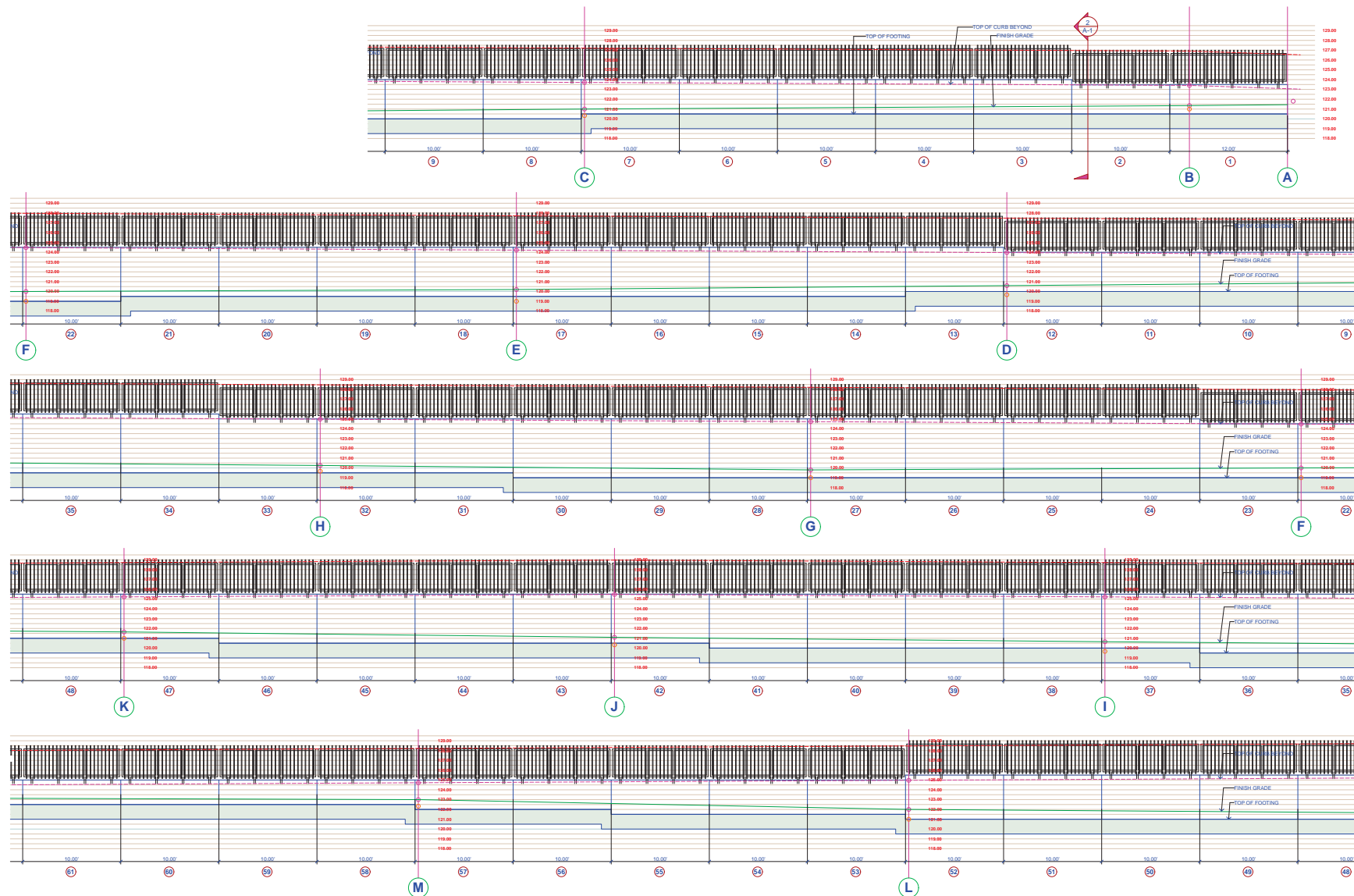
Keisker & Wiggle Architects  
20061 Camino del Estero  
Suite 200  
Camarillo Beach, California 92024  
P: 849/388-1252  
F: 849/388-2750  
E: info@kw-architects.com

PRINTED  
July 29, 2021

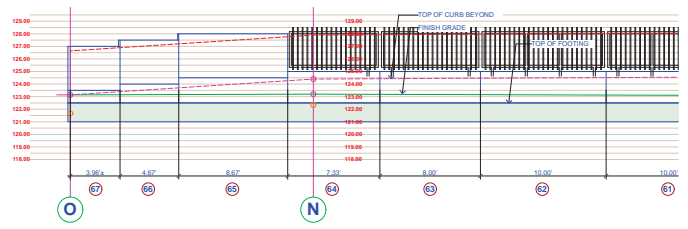
SITE PLANS AND DETAILS

SHEET  
**A-1**

A. BERTILAN AND ASSOCIATES, 1000 W. 20TH AVENUE, SUITE 200, DENVER, COLORADO 80202 (303) 733-9999



**7 TYPICAL WALL/GUARDRAIL SECTION**  
SCALE 3/4" = 1'-0"



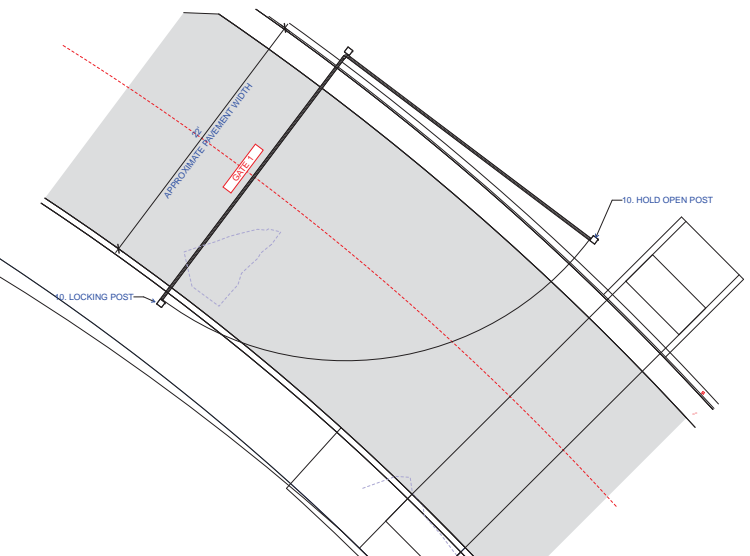
**South of Miles**  
Indian Wells Tennis Garden  
Parking Development  
Garden of Champions LLC  
78200 Miles Avenue, Indian Wells, CA 92210

Keisler & Wiggle Architects  
26961 Camino de Estrella  
Suite 200  
Capistrano Beach,  
California 92624  
P: 949/388-1250  
F: 949/388-2760  
E: info@kw-architects.com

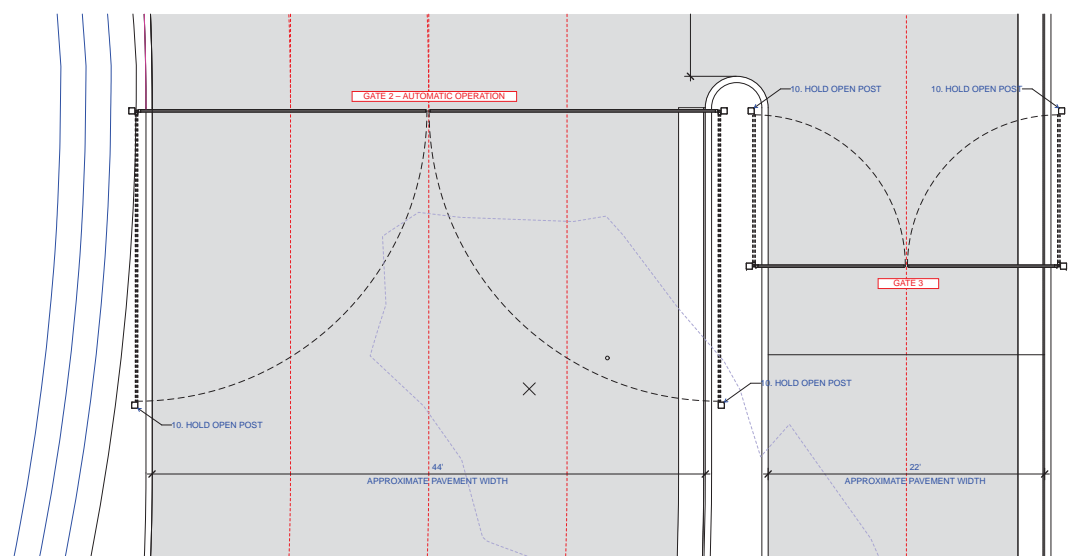
PRINTED  
July 29, 2021

© Keisler & Wiggle Architects, Inc. A copyright is claimed on this unpublished material. No publication or further distribution is allowed without the written permission of Keisler & Wiggle Architects, Inc. All rights reserved.

WALL ELEVATIONS  
**A-2**

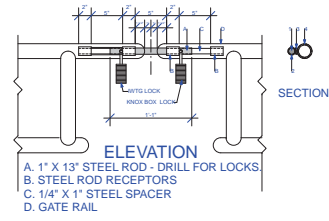
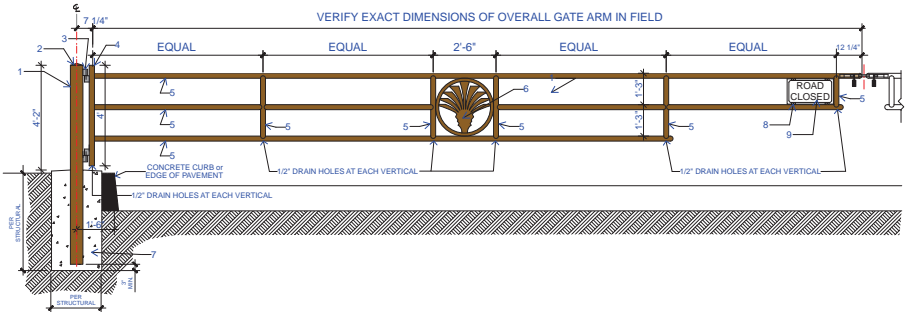


**A GATE 1**  
SCALE 1/8" = 1'-0"



**B GATES 2 AND 3**  
SCALE 1/8" = 1'-0"

- 1 6 X 6 TS POST. STEEL TO BE GALVANIZED AND GROUT SOLID. PREPAINT POST PRIOR TO SETTING IN FOOTING.
- 2 STEEL SLOPING POST CAP, WELD IN PLACE, GRIND SMOOTH.
- 3 LIFTMASTER POWERHINGE WELDED TO POST AND GATE RAIL. ONE PAIR PER GATE LEAF.
- 4 2 1/2" X 2 1/2" TS POST GATE RAIL WELDED TO HORIZONTAL GAT RAILS, TYP. CAP TOP AND BOTTOM.
- 5 2-3/8" SCH. 40 GATE RAIL, TYPICAL.
- 6 GATE LOGO IDENTIFICATION SIGN.
- 7 POURED IN PLACE CONCRETE FOOTING WITH REINFORCEMENT PER ENGINEERING DRAWING.
- 8 PROVIDE TABS FOR "ROAD CLOSED" SIGN
- 9 "ROAD CLOSED" SIGN ± 12" x 22"
- 10 6 X 6 TS HOLD OPEN OR LOCKING POST. STEEL TO BE GALVANIZED AND GROUT SOLID. COORDINATE LATCH WITH GATE LOCK ASSEMBLY. REFER TO SITE PLAN FOR LOCATIONS

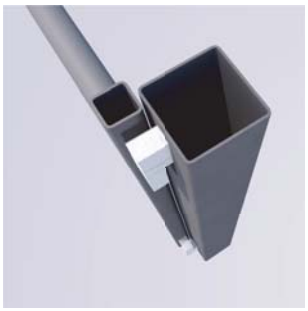


EXISTING EXAMPLE

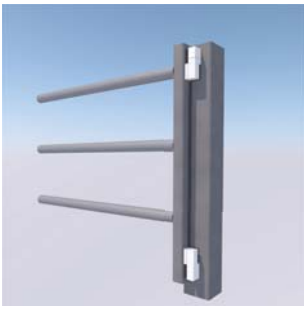
**LEGEND**  
SCALE 1/8" = 1'-0"

**1 DRIVEWAY GATE ELEV**  
SCALE 1/8" = 1'-0"

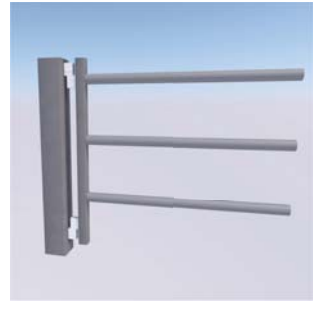
**2 LOCK DETAILS**  
SCALE 1/8" = 1'-0"



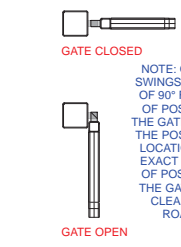
**6 DRIVEWAY GATE OPEN 2**  
SCALE 1/8" = 1'-0"



**5 DRIVEWAY GATE OPEN 1**  
SCALE 1/8" = 1'-0"



**4 DRIVEWAY GATE CLOSED**  
SCALE 1/8" = 1'-0"



**3 GATE CLEARANCE DIAGRAM**  
SCALE 1/8" = 1'-0"



**South of Miles**  
Indian Wells Tennis Garden Parking Development  
Garden of Champions LLC  
78200 Miles Avenue, Indian Wells, CA 92210

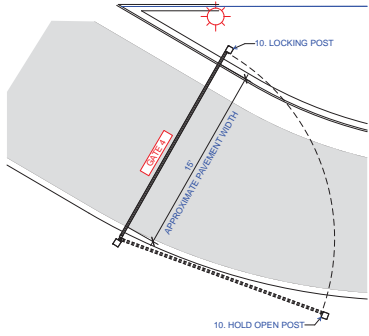
Keisker & Wiggle Architects  
20961 Camino de Estrella Suite 200, Capistrano Beach, California 92624  
P: 949/388-2700 F: 949/388-2700 E: info@kw-architects.com

PRINTED July 29, 2021

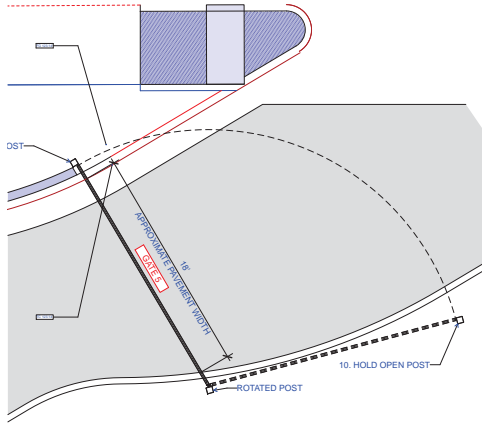
© Keisker & Wiggle Architects, Inc. A copyright is claimed on this unpublished material. No publication or further distribution is allowed without the written permission of Keisker & Wiggle Architects, Inc. All rights reserved.

DETAILS **AD-1**

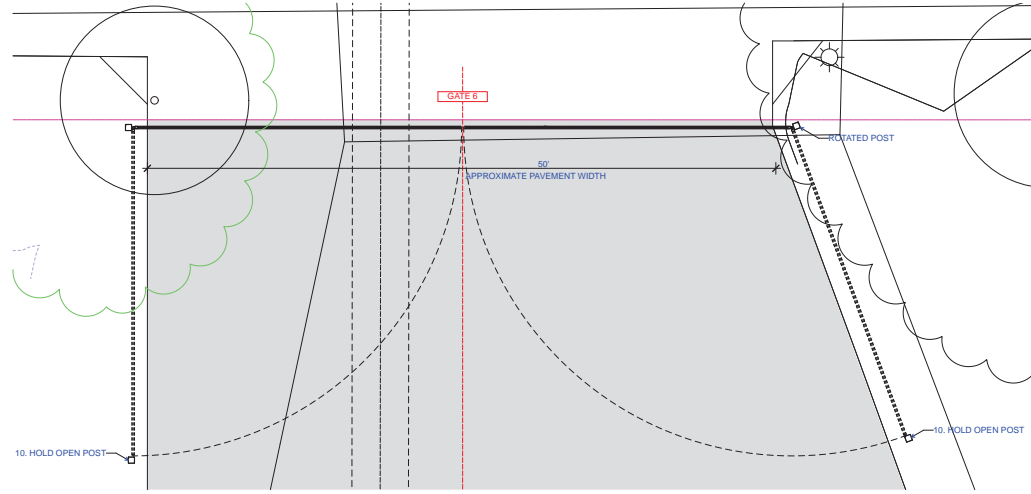
A01 - REDLINES - Revision 02/01/21 12:21 PM - 16104 - N:\Projects\16104\16104.dwg - PLOT: 7/29/21 10:29 AM - 16104



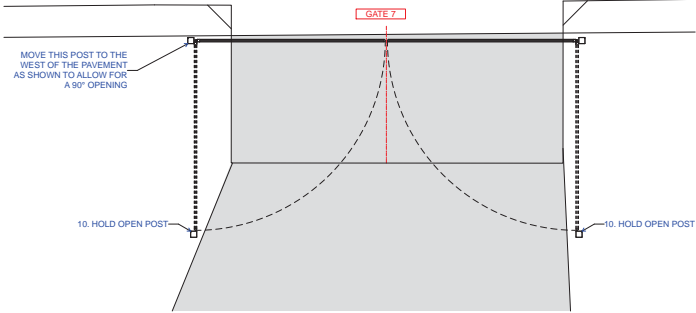
C GATE 4  
SCALE: 1/4" = 1'-0"



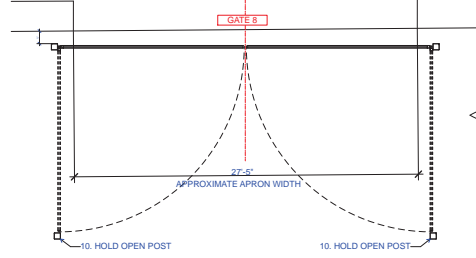
D GATE 5  
SCALE: 1/4" = 1'-0"



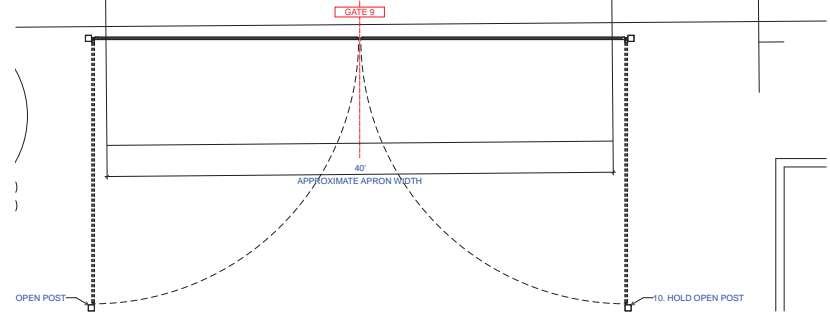
E GATE 6  
SCALE: 1/4" = 1'-0"



F GATE 7  
SCALE: 1/4" = 1'-0"



G GATE 8  
SCALE: 1/4" = 1'-0"



H GATE 9  
SCALE: 1/4" = 1'-0"



**South of Miles**  
Indian Wells Tennis Garden  
Parking Development

Garden of Champions LLC  
78200 Miles Avenue, Indian Wells, CA 92210

**Keisker & Wiggle Architects**  
20961 Camino de Estrella  
Suite 200  
Capistrano Beach,  
California 92624  
P: 949/388-1250  
F: 949/388-2750  
E: [info@kw-architects.com](mailto:info@kw-architects.com)

PRINTED  
July 29, 2021


© Keisker & Wiggle Architects, Inc. A copyright is claimed on this unpublished material. No publication or further distribution is allowed without the written permission of Keisker & Wiggle Architects, Inc. All rights reserved.

DETAILS SHEET  
**AD-2**