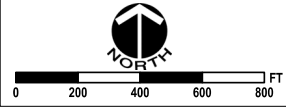
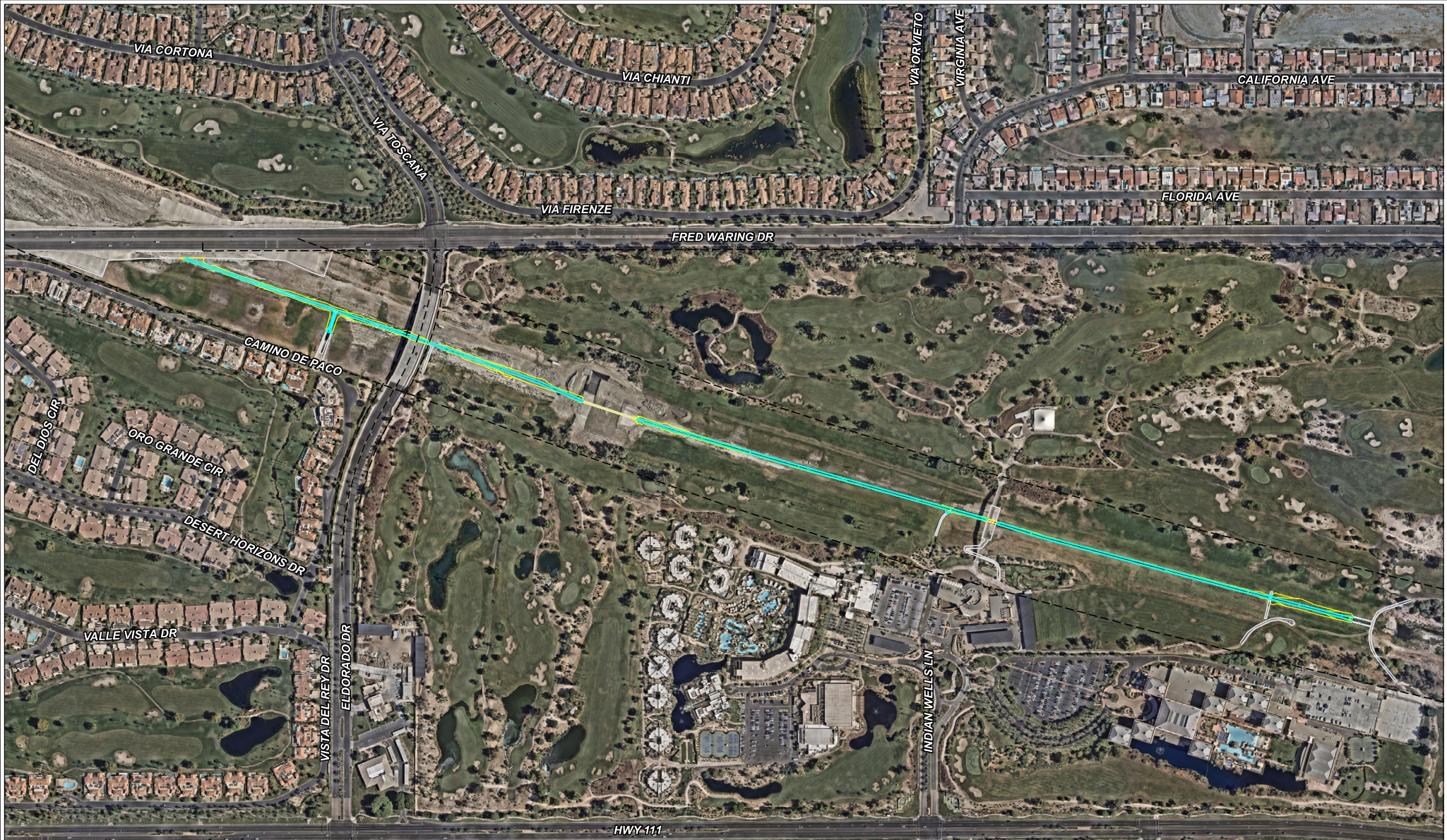


ATTACHMENT #1



DATE: 1/15/2025
DATA SOURCES: RIVERSIDE COUNTY
IT-GIS (2023), USGS, ESRI

PROJECT LOCATION



MSA CONSULTING, INC.
Civil Engineering • Land Surveying • Landscape Architecture
Planning • Environmental Services • Dry Utility Coordination • GIS