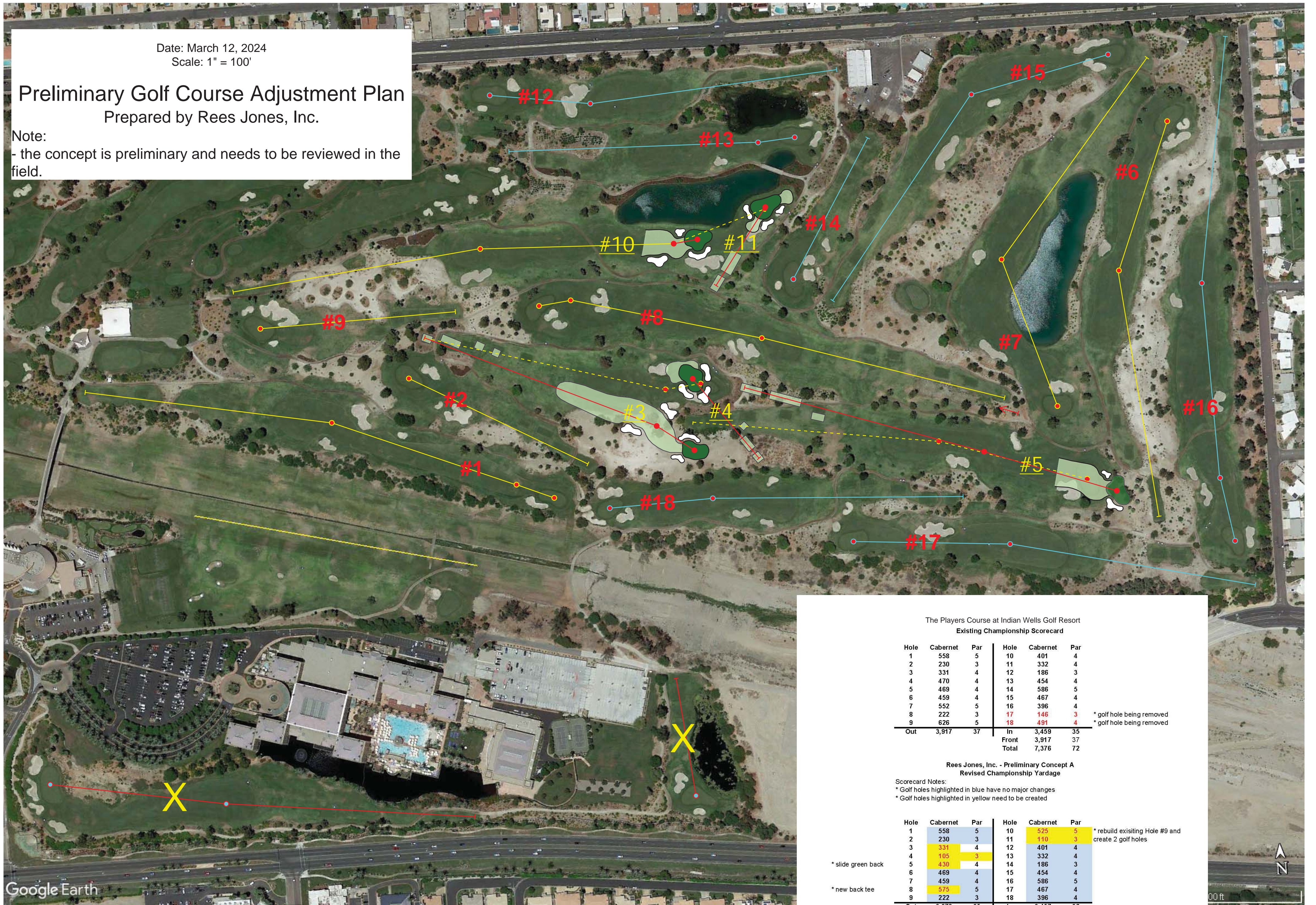


ATTACHMENT#9

Date: March 12, 2024
Scale: 1" = 100'

Preliminary Golf Course Adjustment Plan Prepared by Rees Jones, Inc.

Note:
- the concept is preliminary and needs to be reviewed in the field.



The Players Course at Indian Wells Golf Resort
Existing Championship Scorecard

Hole	Cabernet	Par	Hole	Cabernet	Par
1	558	5	10	401	4
2	230	3	11	332	4
3	331	4	12	186	3
4	470	4	13	454	4
5	469	4	14	586	5
6	459	4	15	467	4
7	552	5	16	396	4
8	222	3	17	146	3
9	626	5	18	491	4
Out	3,917	37	In	3,459	35
			Front	3,917	37
			Total	7,376	72

* golf hole being removed
* golf hole being removed

Rees Jones, Inc. - Preliminary Concept A
Revised Championship Yardage

Scorecard Notes:
* Golf holes highlighted in blue have no major changes
* Golf holes highlighted in yellow need to be created

Hole	Cabernet	Par	Hole	Cabernet	Par
1	558	5	10	525	5
2	230	3	11	110	3
3	331	4	12	401	4
4	105	3	13	332	4
5	430	4	14	186	3
6	469	4	15	454	4
7	459	4	16	586	5
8	575	5	17	467	4
9	222	3	18	396	4
Out	3,379	35	In	3,457	36
			Front	3,379	35
			Total	6,836	71

* rebuild existing Hole #9 and create 2 golf holes

* slide green back

* new back tee