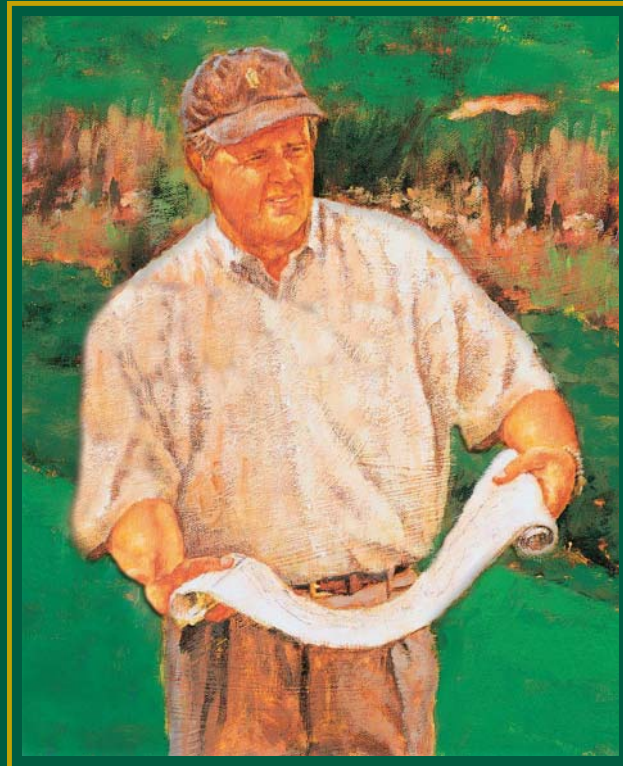


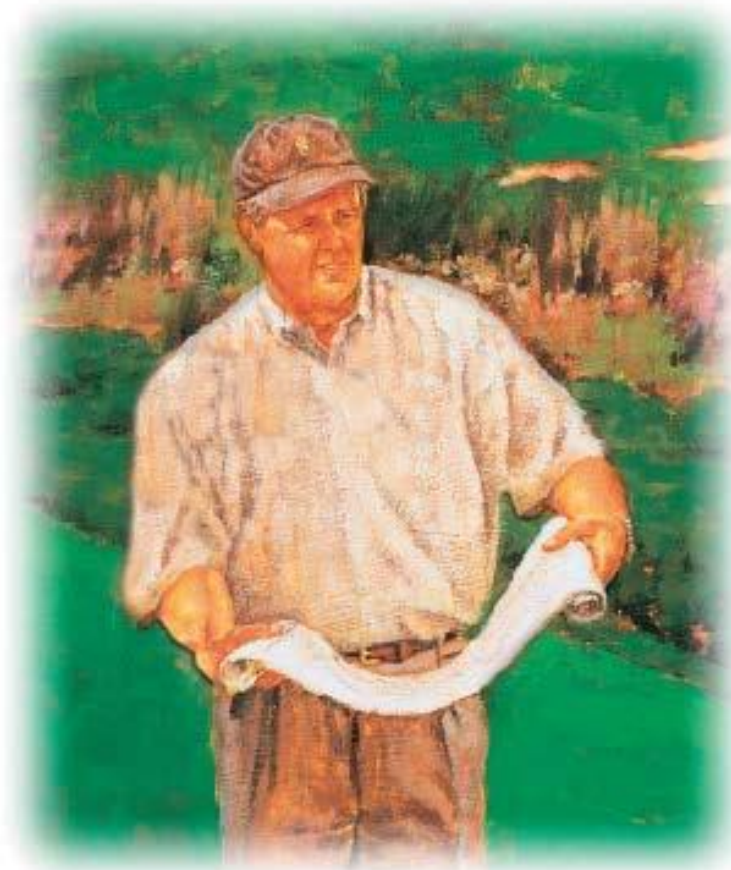
ATTACHMENT #5



JOHN FOUGHT DESIGN
GOLF COURSE ARCHITECTURE

A Comprehensive Approach

Golf course design is a delicate balance of art and science. It requires imagination, instinct for the game and an understanding of technical applications. Of course, experience playing on some of the world's most revered courses



doesn't hurt either. A former U.S. Amateur Champion and two-time winner on the PGA Tour, John Fought, president of John Fought Design, has played tournament golf from the Masters at Augusta to Scotland. As a new leader in golf course architecture, John continues to impress with his award winning layouts, innovative design techniques and vigorous work ethic.

To his clients John brings a comprehensive education, in-the-field experience, meticulous attention to detail and deep understanding of classic design motifs and contemporary construction.

John subscribes to the theory that treating a successful golf course project involves more than designing 18 fabulous holes. Whether maintaining an environmental habitat or maximizing real estate opportunities for the developer, the expertise of John and his talented team of professionals is comprehensive. In an age when golf course architects are more salesmen than artists, John spends many weeks on the road traveling from site to site to inspect the

work he is responsible for planning. It is not unusual for John to visit the site every week, rain or shine, to stay on top of the small details that make a golf course great.



New Course Development

There is no substitute for experience when it comes to designing new golf courses. John boasts a solid background of playing expertise and in-the-field experience that few architects today enjoy. He has designed courses in virtually every region of the United States and played thousands of courses nationally and internationally.

John Fought Design utilizes Computer Aided Drafting (CAD) to develop detailed drawings. With the benefit of this technology, John is able to interface with engineers, planners and other architects involved in the project's development. Though great plans are essential, John keenly understands there is no substitute for personal onsite instruction from the golf course architect. He follows up each site visit with notes and sketches to clarify any adjustments to the work.

"I can honestly say I love every aspect of designing golf courses," John says. "I'm energized by the people I meet through my work and the opportunity to be creative on a daily basis. I want a golfer to come away from one of my courses saying, 'You know, I need to go play that again. I can do better on that hole.' I love hearing that. That's what it's all about."

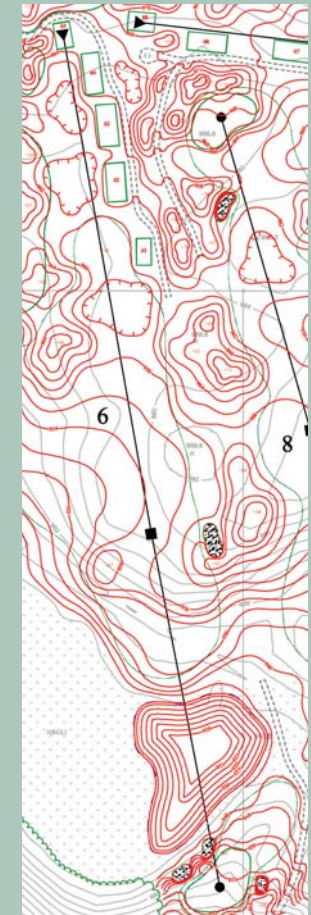


NEW COURSE
DEVELOPMENT

(RIGHT)
THE GALLERY
HOLE NO. 4
BEFORE
CONSTRUCTION



(BELOW)
THE GALLERY
HOLE NO. 4
AFTER
CONSTRUCTION



GRADING

*“You have to design a golf course from a routing standpoint first.
If the routing plan isn’t correct, nothing else matters.”*

Restoration and Renovation

Based on his appreciation and admiration for the work of legendary golf course designer Donald Ross, it seems only fitting that John captured the 1977 U.S. Amateur title on a Ross course, Aronimink Golf Club near Philadelphia. These days, however, when one finds John roaming a Ross course, he's more likely restoring a Ross classic than tackling one of Ross' traditionally tough par-3 holes.

In 2004, John and his team completed a widely acclaimed restoration of Pine Needles Golf Club in Southern Pines, North Carolina, where the goal was to maintain the intent and integrity of the original Ross design from 1928, and restore the shot values that have been changed by today's technology. Moreover, John spent countless hours at the Tufts Archives

in Pinehurst (N.C.), conducting exhaustive research on Ross and his timeless approach to designing a golf course. There, John compared aerial photography of Pine Needles over a 30-year span to determine how the course had evolved from its 1928 debut.

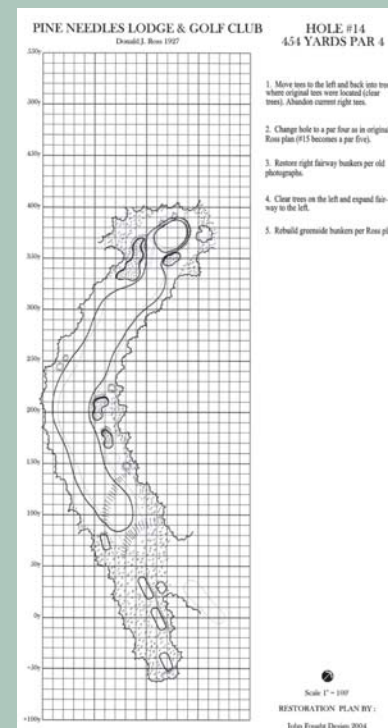
"My job was trying to figure out exactly what Mr. Ross was trying to do," says John, keenly aware that restoring a classic course requires an architect to resist imposing his own views. "I love his work so much, and I studied it so closely, that it wasn't a problem for me to try to think what he would have wanted to instill."

Beyond restoring classics, John has been hired to renovate numerous courses in virtually every part of the U.S., including Indian Wells Golf Resort (Player's), Indian Wells, California; Carmel



Country Club (North), Charlotte, North Carolina; and the Country Club of Jackson, with its three nine-hole layouts, in Jackson, Mississippi.

John's passion and love for the game shines through, whether when he was actively playing—in 1979 he was the PGA Tour's Rookie of the Year after winning tournaments in consecutive weeks—or today as an architect, where four of his courses are ranked in the "Top 100" (*Golfweek*–Modern) and his Pine Needles restoration was singled out by *Golf Digest* as a "Best New Remodel" for 2005.



RESTORATION AND RENOVATION

(CLOCKWISE FROM FAR LEFT)
BLACK BUTTE RANCH RENOVATION

DONALD ROSS PLAYING PINE NEEDLES GC

PINE NEEDLES GC RESTORATION

EARLY BUNKER CONSTRUCTION

“(John) Fought has brought Pine Needles back in so many ways, while making it relevant for today’s player. More to the point, he’s brought it back so that men and women will play from the fairway plateaus that were so much a part of Ross’s design. The ghost of Donald Ross can rest. Fought’s sensitive touch at Pine Needles should bring course developers to his doorstep. They’ll find a man who knows how to design new courses and to restore old ones.”

LOREN RUBENSTEIN, GOLF WRITER / COLUMNIST, THE (TORONTO) GLOBE AND MAIL

Championship Pedigree

When you stamp the John Fought Design pedigree on a course, one thing is for sure: They'll be traditional and they'll be classic. More than likely, too, they'll grab the rapt attention of those who are selecting championship sites. Here's a look at Fought-designed courses that have hosted championships:

Pumpkin Ridge Golf Club

- 1993-1994 Nike Tour Championship
- 1996 U.S. Amateur Championship
- 1997 U.S. Women's Open Championship
- 2000 U.S. Junior Amateur Championship
- 2003 U.S. Women's Open Championship
- 2006 U.S. Women's Amateur Championship
- 2009-2012 Women's Safeway Classic
- 2014 Winco Foods Portland Open

Somerby Golf Club

- 2006-2007 Showdown at Somerby

Sunriver Resort (Crosswater, The Meadows)

- 1999 Shell's Wonderful World of Golf
- 2000 NCAA Women's National Championship
- 2001, 2007, 2013, 2017 PGA Club Professional Championship
- 2002 U.S. Women's Amateur Public Links Championship
- 2005 NCAA Men's and Women's Championship
- 2007 USGA Senior Women's Amateur Championship
- 2007-2010 JELD-WEN Tradition (Champions Tour)

The Reserve Vineyards & Golf Club

- 1998-2002 Fred Meyer Challenge
- 2003-2006 JELD-WEN Tradition (Champions Tour)

Rush Creek Golf Club

- 1997 Edina Realty LPGA Classic
- 1998 Rainbow Foods LPGA Classic
- 1999 Samsung World Championship (LPGA)
- 2004 U.S. Public Links Championship

The Gallery Golf Club

- 2000 Tucson Open (North Course)
- 2007 Accenture Match Play Championship (South Course)
- 2008 Accenture Match Play Championship (South Course)
- 2009 Pacific Coast Amateur

Pine Needles Resort (Donald Ross – Restoration)

- 2007 U.S. Women's Open Championship

The Country Club of Jackson (Mississippi)

- 2015 Sanderson Farms Championship (PGA Tour)

Windsong Farm Golf Club

- 2010 Big Ten Championship

Phoenix Country Club

- 2017 Charles Schwab Cup Championship



GOLF WEEK

BEST TOP 30 MUNICIPAL COURSES

COURSE	LOCATION	ERA*	ARCHITECT	RATERS AVG.
1. Bethpage State Park (Black)	Farmingdale, NY	Classic	Rees Jones, A.W. Tillinghast	8.07
2. Chambers Bay GC	University Place, WA	Modern	Robert Trent Jones, Jr., Bruce Charlton	7.78
3. Indian Wells GR (Players)	Indian Wells, CA	Modern	John Fought	6.14
4. Pinon Hills GC	Farmington, NM	Modern	Ken Dye	6.14
5. Torrey Pines (South)	La Jolla, CA	Classic	William F. Bell	6.10
6. TPC Scottsdale (Stadium)	Scottsdale, AZ	Modern	Jay Morrish, Tom Weiskopf	5.95
7. Indian Wells GC (Celebrity)	Indian Wells, CA	Modern	Clive Clark	5.93
8. Memorial Park	Houston, TX	Classic	John Bredemus, Baxter Spann	5.90
9. Thunderhawk GC	Beach Park, IL	Modern	Robert Trent Jones, Jr.	5.86
10. Wintonbury Hills GC	Bloomfield, CT	Modern	Pete Dye, Tim Liddy	5.78
11. Bear Trace (Ross Creek)	Clifton, TN	Modern	Jack Nicklaus	5.71
12. Mount Pleasant GC	Baltimore, MD	Classic	Gus Hook	5.70
13. Harding Park GC	San Francisco, CA	Classic	Willie Watson	5.67
14. George Wright Municipal GC	Boston, MA	Classic	Donald Ross	5.63
15. Fossil Trace	Golden, CO	Modern	Jim Engh	5.61
16. TPC Scottsdale (Champions)	Scottsdale, AZ	Modern	Randy Heckenkemper	5.59
17. Bethpage State Park (Red)	Farmingdale, NY	Classic	A.W. Tillinghast	5.56
18. Triggs Memorial GC	North Providence, RI	Classic	Donald Ross	5.55
19. Torrey Pines (North)	La Jolla, CA	Modern	William F. Bell	5.52
20. Indian Canyon	Spokane, WA	Classic	H. Chandler Egan	5.50
21. Laurel Hill GC	Lorton, VA	Modern	Bill Love	5.45
22. Hideout GC	Monticello, UT	Modern	Forrest Richardson	5.45
23. Chickasaw Pointe	Kingston, OK	Modern	Randy Heckenkemper	5.43
24. Sand Creek Station GC	Newton, KS	Modern	Jeff Brauer	5.40
25. Sunbrook GC (Pointe/Woodbridge)	St. George, UT	Modern	Ted Robinson	5.38
26. North Palm Beach CC	North Palm Beach, FL	Modern	Charles Banks, Jack Nicklaus, Seth Raynor	5.36
27. Chaska Town Course	Chaska, MN	Modern	Arthur Hills	5.36
28. Montauk Downs State Park	Montauk Point, NY	Modern	Rees Jones	5.33
29. Brown Deer Park GC	Milwaukee, WI	Classic	George Hansen	5.29
30. Wingpoint, GC	Salt Lake, UT	Modern	Arthur Hills	5.27

[Golfweek June, 2008] *Classic courses were built before 1960 and Modern courses were built from 1960 to present.

CHAMPIONSHIP PEDIGREE

(CLOCKWISE
FROM RIGHT)
CRISTIE KERR WINS
THE 2007 U.S. OPEN
AT PINE NEEDLES
RESORT

TOM WATSON
WINS THE 2003
JELD-WEN TRADITION

THE GALLERY GOLF
CLUB, HOME TO THE
2007 ACCENTURE
MATCH PLAY
CHAMPIONSHIP





JOHN FOUGHT DESIGN
GOLF COURSE ARCHITECTURE

What They're Saying About John Fought and His Courses...



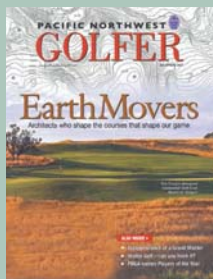
“Fought wasn’t one of those tour players steered by an agent into design projects just for the money. He was a rare one, a player who developed a genuine passion for architecture and converted that passion into a successful second career.”

RON WHITTEN, WRITER, GOLF WORLD MAGAZINE



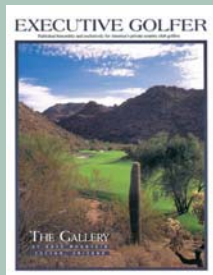
“Over the course of our working relationship and subsequent “after opening” consultations I have grown to appreciate John as someone who understands all aspects of golf course design, construction and playability; and as someone who could be trusted to be fair to all interests. His attention to detail, his follow through and follow up kept our project on track and within budget. He took an empty canvas and created an affordable masterpiece.”

ED TODD, CITY MANAGER, CITY OF DINUBA (CALIFORNIA)



“The value of John’s work has exceeded our expectations. Despite being open for only seven months, the course has received glowing accolades from the national media resulting in Sand Hollow being rated #1 in Utah! In a market struggling to survive the current economic slowdown, our golf results have been both spectacular and profitable.”

DAVE WILKEY, FOUNDER, SAND HOLLOW RESORT



KELLY MILLER

“We chose John because he is an avid student of Donald Ross and has played a lot of his courses, is a lover of golf and its history, and was willing to do the research necessary to accomplish our goals and consider our input. Having had time for the course to grow in and mature, I’m only more pleased with our results. The genius of Ross was in the subtleties, and John was able to capture this. Given time, John’s restoration work will become even more admired as a result of his hard work and attention to detail.”

KELLY MILLER, PRESIDENT, PINE NEEDLES LODGE & GOLF CLUB

“From the beginning of our golf architect search to finishing the renovations it has been a pleasure to work with such a consummate professional. As with any private club that uses the Committee structure it is not always easy to get consensus...you excelled when it came to dealing with the Committee. You were able to back up your decisions with logic and experience which resulted in the spectacular, final result.”

PETER OLDFIELD, GENERAL MANAGER, ROSEDALE GOLF CLUB

“John Fought is one of the pre-eminent golf course architects in the modern era. He has the ability to design courses that will stand the test of time much like the great architects of the golden age of design.”

REED MACKENZIE, PAST PRESIDENT, USGA

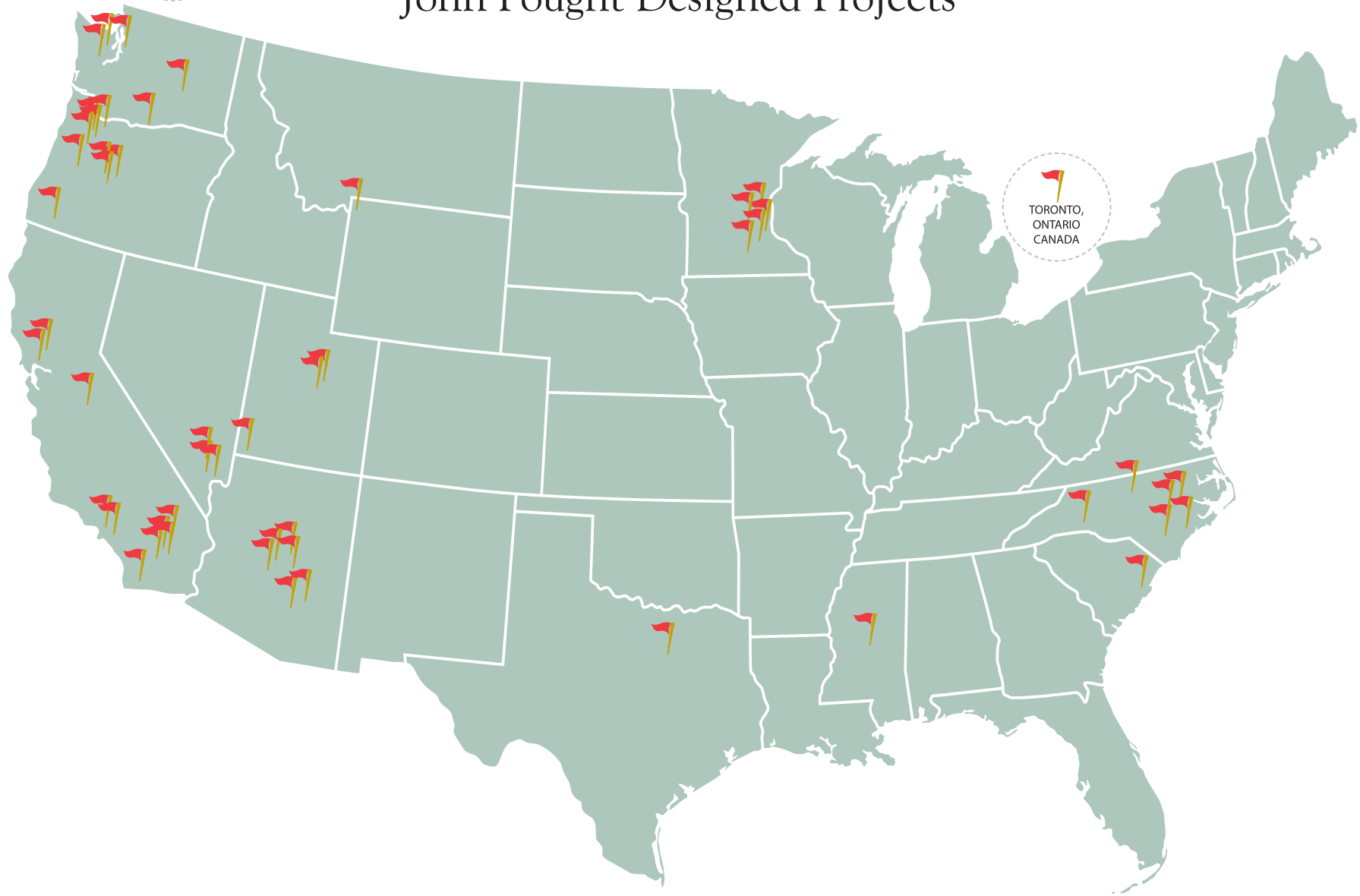


JOHN FOUGHT DESIGN
GOLF COURSE ARCHITECTURE

John Fought Designed Projects



WHISTLER,
B.C. CANADA



TORONTO,
ONTARIO
CANADA

Windsong Farm Minneapolis, Minnesota



JOHN FOUGHT DESIGN
GOLF COURSE ARCHITECTURE



SCORECARD

Championship-7,526
Black-7,167
Blue-6,689
Stone-6,307
Sienna-5,729
Green-5,020

Located on a 248-acre tract on a former horse farm, the layout has favorably been compared to Pumpkin Ridge. The par-71 course's defining features include large greens with delicate breaks, collection areas inspired by Donald Ross' courses and classic square tee areas. While subtle putting surfaces and collection areas around the greens give Windsong Farm the feel of a modern-day classic, it also has a taste of old-school courses. *Golf Digest* named Windsong Farm as one of the "Best New Private" courses shortly after its June 2004 opening.

COURSE DESIGNED WITH TOM LEHMAN



Grand Canyon University Golf Course Phoenix, Arizona



JOHN FOUGHT DESIGN
GOLF COURSE ARCHITECTURE



SCORECARD

Purple-6,807
Black-6,571
White-6,018
Grey-5,649
Red-5,047

As a part of the city of Phoenix's public golf course group, Maryvale Golf Course had been in severe decline for more than 10 years. As a part of a public/private partnership Grand Canyon University proposed to fully upgrade and rename the facility and provide a host venue for its men's and women's golf teams. With new management from GCU the golf course has seen major resurgence in play with its wonderful new golf course and complimentary golf facility which is the busiest golf course in the city of Phoenix.



Centennial Golf Club Medford, Oregon



JOHN FOUGHT DESIGN
GOLF COURSE ARCHITECTURE



SCORECARD

Black-7,309
Purple-6,900
White-6,401
Green-5,760
Rose-5,244

Southern Oregon is a wonderful rugged area that features tree covered mountains while having a relatively temperate climate. The new golf course has a definite meadow feel as the property is nearly devoid of trees but has lovely grass lands that surround all the golf holes. The course is strategically challenging but is fun to play as evidenced by it being named one of the top six most enjoyable places to play in the United States by a survey conducted by *Golf World* magazine.



Carmel Country Club (North Course) Charlotte, North Carolina



SCORECARD

Black-6,807
Gold-6,571
Blue-6,173
White-5,700
Green-5,256
Red-4,740
Purple-4,117

Carmel Country Club features two high-quality golf courses which could not be more different. The new North Course was re-designed in a classic Ross style motif which features stunning grass-face bunkers that have been strategically placed to challenge even the most ardent fan of Donald Ross courses. The small but interesting putting surfaces provide a plethora of corner hole locations. With this new North golf course comes interesting challenges not found on either the South Course or the original North Course.



Sand Hollow Resort Hurricane, Utah



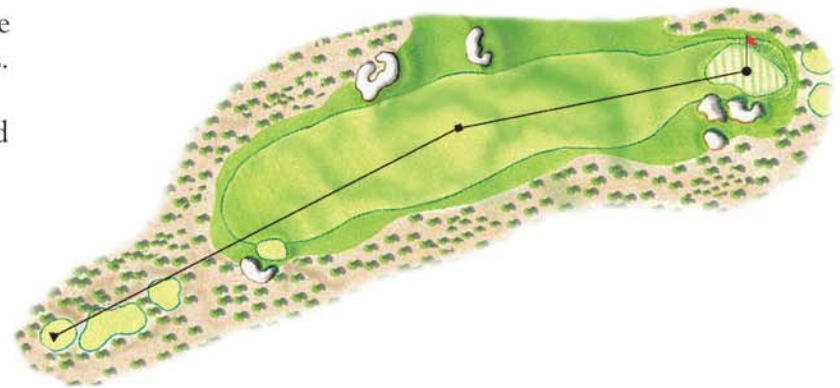
JOHN FOUGHT DESIGN
GOLF COURSE ARCHITECTURE



SCORECARD

Black-7,315
Blue-6,893
White-6,462
Yellow-6,060
Red-5,306

Southern Utah with its National Parks features some of the most spectacular scenery in the United States. Sand Hollow was built on property that has wonderful links style topography and was constructed entirely out of native red sand. The 27 holes of golf wind their way over rolling terrain, alongside a sheer cliff and through majestic rock outcroppings while providing wonderful mountain vistas in all directions. *Golf Digest* ranked Sand Hollow the #1 golf course in the state of Utah just a few months after opening.



The Gallery-South Course Marana, Arizona



JOHN FOUGHT DESIGN
GOLF COURSE ARCHITECTURE



The Gallery

SCORECARD

Gold-7,351
Blue-6,928
Green-6,312
White-5,825
Red-5,215

Home to the 2007 and 2008 Accenture Match Play Championship, this playable and picturesque desert course, with stunning long-range views of the Tortolita Mountains, features wide fairways, a tremendous variety of holes and unique turtle-back greens. With the luxury of wide corridors and plenty of space, there are different driving angles from the various sets of tees. The native vegetation is arguably the nicest of any course in Arizona. The Gallery's original layout, the North Course, a John Fought/Tom Lehman co-design, hosted the PGA Tour's 2000 Tucson Open.



The Country Club of Jackson Jackson, Mississippi



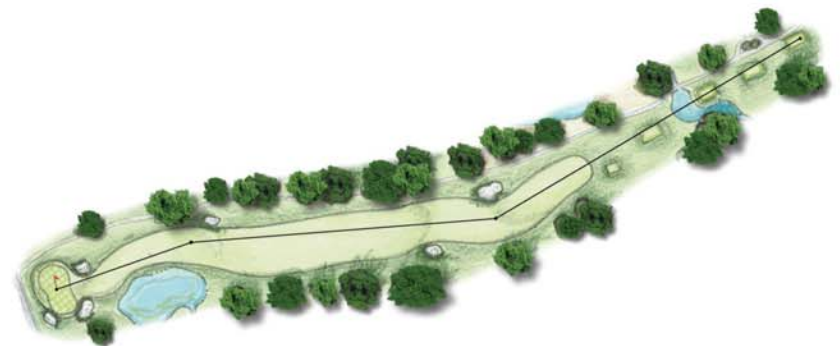
JOHN FOUGHT DESIGN
GOLF COURSE ARCHITECTURE



SCORECARD

Black-7,304
Blue-6,768
White-6,307
Gold-5,644
Red-5,110

After undergoing several renovation projects over the years, the members at the Country Club of Jackson voted to re-construct the golf course in a much more homogenous and traditional motif while modernizing its infrastructure. Although the golf holes remain in essentially the same location, all of the golf features have been re-designed allowing the members to enjoy their golf course. The course has returned to being ranked one of the best in the state of Mississippi.



Wilmington Municipal Golf Course Wilmington, North Carolina



SCORECARD

Blue-6,784
White-6377
Gold-5,567
Red-4,723

As one of the few municipal course's designed by the great Donald Ross, Wilmington Municipal Golf Course is a wonderful community facility. But as the years went by the 1926 course had become very dilapidated and was in serious need of a restoration. With John Fought's reputation for reinvigorating historic golf courses he was hired by the City to assist with modernizing the classic lay-out. John also developed a wonderful new children's learning facility known as The First Tee of Greater Wilmington adjacent the ninth hole near the classic Ross Course.



Dallas Country Club Dallas, Texas



JOHN FOUGHT DESIGN
GOLF COURSE ARCHITECTURE

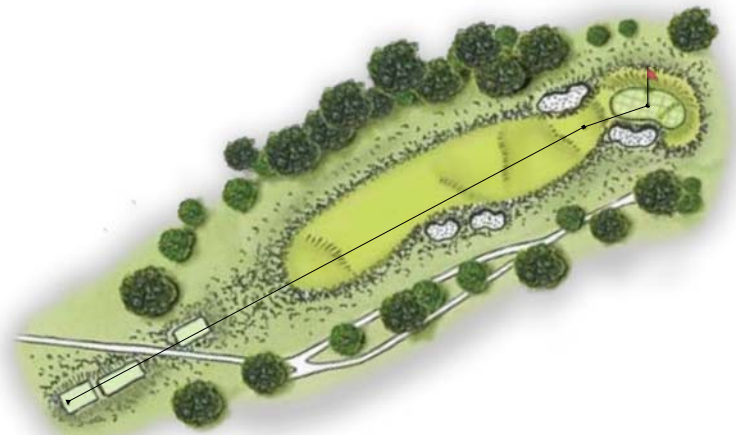


1896

SCORECARD

Black - 6,515
Blue - 6,094
White - 5,698
Red - 5,054

Dallas Country Club, founded 1896, has long been the center of the social and economic communities of Dallas. Over the years this historic tree lined golf course had lost its vintage roots. A complete renovation consisted of constructing new tees, greens and bunkers as well as instituting a selective tree management and removal program. With the recent completion of the Master Plan the classic lines and playing strategy has been restored and reinvigorated the course's status in the golf community.



Pine Needles Southern Pines, North Carolina



JOHN FOUGHT DESIGN
GOLF COURSE ARCHITECTURE



SCORECARD

Medal-7,015
Ross-6,436
Regular-5,985
Forward-5,536

As an original Donald Ross design, careful planning and construction were required to restore this wonderful, classic course. In returning Pine Needles to its playing personality of more than 75 years ago, while also keeping pace with today's technology, John Fought dramatically re-established its celebrated reputation. In addition to extending tees, other course changes include reshaping bunkers, enlarging greens, all in accordance with Ross' design philosophy. *Golf Digest* ranked Pine Needles in the top 10 for "Best New Remodel" for 2005.

RESTORATION OF ORIGINAL DONALD ROSS DESIGN



Washington National Golf Club Seattle, Washington



JOHN FOUGHT DESIGN
GOLF COURSE ARCHITECTURE



SCORECARD

Husky-7,304
Senior-6,782
Junior-6,424
Sophomore-5,794
Freshman-5,117

With four notably long par fours, including the 475-yard (from the back tees) finishing hole, the University Course is a difficult test for even the strongest of players. The 18th hole, as beautiful as it is tough, caps a challenging and picturesque finishing five-hole stretch. Its brilliant design is enhanced by impeccable playing conditions, contrasting transitional areas and sheer grandeur. The course, which opened September 2000, was the site of the 2002 Women's NCAA Division I Championship and is home to the University of Washington golf teams.



Rush Creek Maple Grove, Minnesota



JOHN FOUGHT DESIGN
GOLF COURSE ARCHITECTURE



SCORECARD

Gold-7,125
Blue-6,747
Silver-6,350
Green-5,422

The Minnesota landscape, with its gently rolling topography, brilliant flora, diverse tree cover and abundant water bodies, forms the palette for Rush Creek. The motif of the golf course is decidedly classic, mimicking a time when the legendary Donald Ross was creating his master works. The relatively small, yet subtle putting surfaces promote precise iron play and a steady putting touch. Host of an LPGA Tour event and the 2004 U.S. Amateur Public Links Championship, Rush Creek is a delightful place to play golf and a stern challenge.

COURSE DESIGNED WITH BOB CUPP



The Reserve Portland, Oregon



JOHN FOUGHT DESIGN
GOLF COURSE ARCHITECTURE



SCORECARD

Gold-7,172
Blue-6,809
White-6,201
Red-5,189

One of two championship courses at The Reserve Vineyards and Golf Club, the South Course was the four-year home to the JELD-WEN Tradition, a major on the Champions Tour. Among the more remarkable elements of the course are the gleaming Idaho white-sand bunkers. Carefully placed, these bunkers create stunning visual contrasts with the various shades of green showcased in the surrounding vegetation. Two of the course highlights are the 605-yard, par 5 6th hole and the 460-yard, par 4 17th hole.



Crosswater Sunriver, Oregon



JOHN FOUGHT DESIGN
GOLF COURSE ARCHITECTURE



CROSSWATER

SCORECARD

Gold-7,683
Silver-7,273
Blue-6,811
White-6,185
Red-5,359

Crosswater is the third course and crown jewel of Central Oregon's premier resort community known as Sunriver. Selected as *Golf Digest's* Best New Resort Course for 1995, this Fought/Bob Cupp co-design later was honored by the publication as one of "America's 100 Greatest Courses" and by *GOLF Magazine* as a "Top 100 You Can Play." The golf holes meander around two pristine rivers and boast spectacular views of Mt. Bachelor. The golf course is difficult but fair with a collection of memorable holes, particularly the four par-fives.

COURSE DESIGNED WITH BOB CUPP



Indian Wells Golf Resort (Player's Course) Indian Wells, California

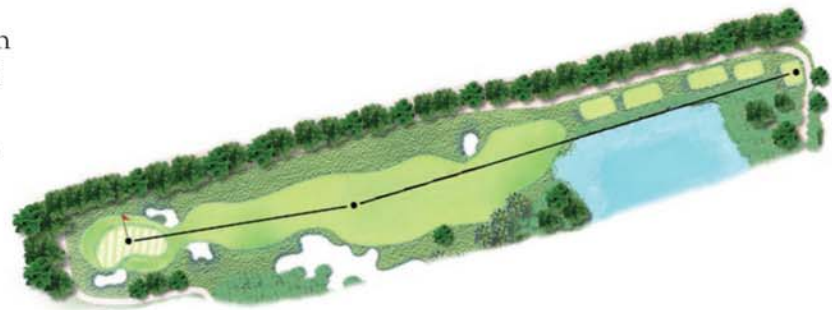


JOHN FOUGHT DESIGN
GOLF COURSE ARCHITECTURE



SCORECARD
Cabernet-7,376
Blue-6,931
White-6,316
Green-5,636
Red-5,108

The new Player's Course is part of 36-hole resort complex owned and operated by the city of Indian Wells. This course features spectacular sand faced bunkers that have been strategically placed to be both beautiful and thought provoking. California Barrancas that border or bisect seven of the golf holes have been constructed making shot placement a necessity. Shortly after opening *Golfweek* ranked the Player's course #3 in the country in its survey of publicly owned golf courses.



Wayzata Country Club Wayzata, Minnesota



JOHN FOUGHT DESIGN
GOLF COURSE ARCHITECTURE



SCORECARD

Herron-7,106
Blue-6,694
White-6,239
Red-5,369

During the boom of golf course construction in the 1950's Wayzata Country Club was constructed in an affluent suburb of Minneapolis, Minnesota. Over the years many of the features on the course had become worn and needed to be improved. The Club also wanted to expand its practice area to include six short practice holes and a new double-ended driving range. The improvements made to the course including rectangular tees and traditional grass-faced bunkers have created a classic look that re-establishes the Club as one of the best in the state.



Phoenix Country Club Phoenix, Arizona



JOHN FOUGHT DESIGN
GOLF COURSE ARCHITECTURE



SCORECARD

Black-6,763
White-6,372
Blue-5,694
Green-5,106

As the one of the oldest clubs in North America, Phoenix Country is certainly a rare bird. The club was founded in 1899 and has been the host venue for the Phoenix Open and more recently, The Schwab Cup. The classic design, which includes Beautiful sand-face bunkers and small gently raised greens, was restored by a major renovation in 2002 by John Fought & Tom Lehman. By any account, Phoenix Country Club is an oasis in the middle of a major metropolitan area. The golf course continues to be a popular venue for golfers through all generations of time.



Pumpkin Ridge (Ghost Creek & Witch Hollow) Cornelius, Oregon



JOHN FOUGHT DESIGN
GOLF COURSE ARCHITECTURE



SCORECARD

Ghost Creek:

Gold-6,839
Blue-6,490
White-6,010
Red-5,326

Witch Hollow:

Gold-7,014
Blue-6,513
White-6,009
Red-5,277

Both golf courses at Pumpkin Ridge Golf Club have received national accolades. Upon opening, Ghost Creek was selected as *Golf Digest's* Best New Public Course and Witch Hollow was the Best New Course runner-up in the private category. The golf courses' classic motif and mature look have garnered high praise by golf's ruling bodies, including the United States Golf Association, which selected Pumpkin Ridge to host its 1996 U.S. Amateur, won by Tiger Woods, and its 1997 U.S. Women's Open.

COURSE DESIGNED WITH BOB CUPP



Meadows Sunriver, Oregon



JOHN FOUGHT DESIGN
GOLF COURSE ARCHITECTURE



SCORECARD

Black-6,994
Blue-6,625
White-6,022
Red-5,287

The \$3.5 million redesign called for all new greens, new and replaced bunkers, wider fairways and, in some cases, completely new holes. While most of the holes on the Meadows Course have a welcoming spaciousness to them, there are still challenging narrow holes preserved from the original design. The new design pays tribute to the great American courses from the 1920s and 1930s with its aesthetic grace, while its dramatic use of directional and fore-bunkers serve up ample challenges.



Somerby Byron, Minnesota



JOHN FOUGHT DESIGN
GOLF COURSE ARCHITECTURE

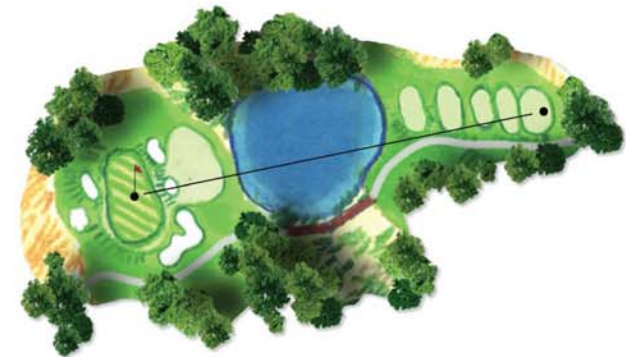
Somerby
GOLF COMMUNITY

SCORECARD

Gold-7,209
Silver-6,728
Bronze-6,205
White-5,739
Royal-5,160

On a gently rolling canvas dotted with thick stands of trees, meandering creeks and pockets of grassy wetland areas, Somerby Golf Club paints a glorious picture. The wetland areas have been integrated into the holes along with several lakes, which play a major role in the strategy on six holes. Regardless of how one scores, Somerby's tranquil beauty, immaculate bentgrass fairways and greens will yield a memorable golf experience. *Golf Digest* ranked Somerby in the top 10 for "Best New Private" courses for 2005.

COURSE DESIGNED WITH TOM LEHMAN



Black Butte Ranch (Glaze Meadow) Black Butte Ranch, Oregon



JOHN FOUGHT DESIGN
GOLF COURSE ARCHITECTURE



**Black Butte
Ranch**

THE GOLF CLUB

SCORECARD

Black - 7,007
Blue - 6,454
White - 5,931
Red - 5,367
Yellow - 4,909

The Glaze Meadow course at Black Butte Ranch opened in 1978 as the second course on the expansive ranch property. Through the years the course had begun to show its age and was in need of renovation. Following a thorough masterplan the members of BBR elected to close the course for one year to allow time for the extensive renovation and grow-in which included all major features as well as significant tree removal. Reopened Memorial Day 2012, the course now features a classic design motif and plays just over 7,000 yards.



Rosedale Golf Club Toronto, Canada



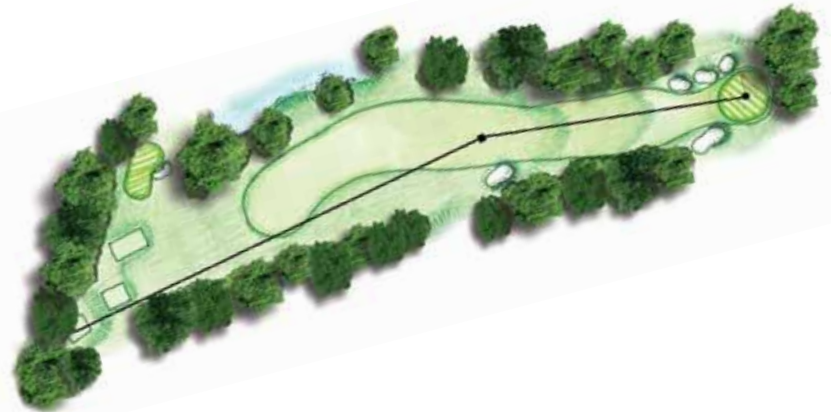
JOHN FOUGHT DESIGN
GOLF COURSE ARCHITECTURE



SCORECARD

Gold-6,525
Blue-6,143
White-5,655
Red-5,180

Located in the center of Toronto, Canada, Rosedale Golf Club is an original Tom Bendelow design but was renovated by Donald Ross in 1919. However, over the history of this fine club several different golf architects changed the course to reflect a more modern design style. John Fought was hired to assist the Club with restoring the golf features to its Donald Ross heritage. The new bunkering, tee boxes and several greens complexes have re-invigorated the golf course and have added a classic beauty that will be prominent for years to come.



Trophy Lake Port Orchard, Washington



JOHN FOUGHT DESIGN
GOLF COURSE ARCHITECTURE



SCORECARD

Professional-7,206
Champion-6,756
Resort-6,162
Players-5,654
Forward-5,342

Trophy Lake offers a daring, risk-reward golf experience with expansive greens and more than 80 grass-faced, white sand bunkers strategically placed throughout the course's 7,206 yards. The serene setting and inspiring views of the Olympic Range and Mount Rainier heighten the drama. One visit and the beauty and charm of Trophy Lake will reel you in hook, line and sinker. The course was named "Best Public Golf Course in the Region" by the *Seattle Post-Intelligencer's* reader survey in the spring of 2003.





JOHN FOUGHT DESIGN
GOLF COURSE ARCHITECTURE

8040 E. Morgan Trail Suite #18
Scottsdale, Arizona 85258
(480) 991 9858